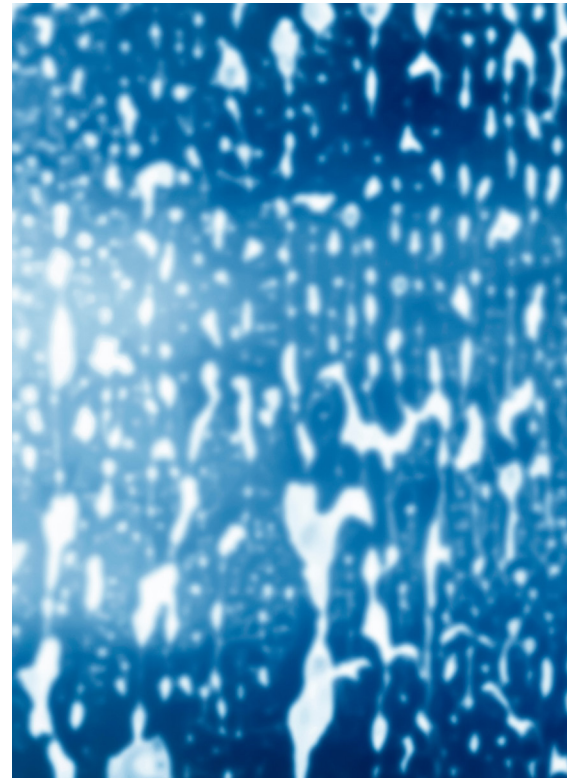


INDUSTRIAL LINE

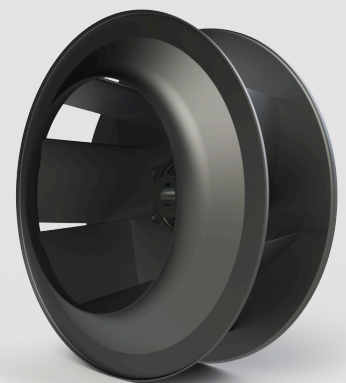
CAR WASH



► **APPLICATIONS**

Drying Fans / Fans for Car Wash Systems

The punker **Car Wash** solution is a high-efficiency, low-noise fan wheel that helps carwash system manufacturers or manufacturers of car wash dryers achieve high airflow speeds in the dryer nozzles and thus optimal drying results. At the same time, power consumption remains low in the main operating mode.

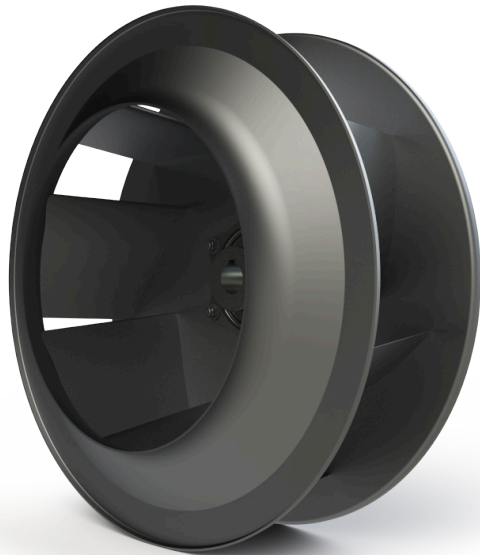


punker GmbH
 Newark 1
 24340 Eckernförde
 Germany
 Fon: +49.4351.472.0
 Fax: +49.4351.472.740
 info@punker.de
 ► www.punker.com

punker LLC
 1112 Lincoln County Pkwy
 Lincolnton, NC 28092
 USA
 Fon: +1.828.322.1951
 Fax: +1.828.328.1336
 info@punker.com
 ► www.punker-usa.com

CAR WASH

SPECIFICATIONS



► TECHNICAL DATA

- Very high efficiency, low noise emission
- Material: powder coated aluminum
- Direction of rotation: clockwise and counter clockwise (R/L)
- Installation Type: scroll housing
- Design: single flow
- Mounting: Fixed hub
- Temperature range: 0°C to +50°C, higher or lower range possible after technical clarification
- Durability through cycle fatigue testing
- Half key balance according to ISO 21940-32 (applies to hub-execution only)
- Balance according to ISO 21940-11
- Compatible with various AC/EC motors 50/60 Hz

► CUSTOMER NOTE

- Perform installation and start-up checks
- Designed for continuous operation S1
- Balance check with possible trim balance is recommended
- Checking frequencies necessary, system resonant frequencies must be avoided
- Installation and start-up should be carried out by qualified personnel only
- For technical information please refer to fan wheels data sheet [0.0.0.01/0.0.0.02](#)
- Use this fan wheel only with the corresponding inlet cone

punker GmbH
 Newark 1
 24340 Eckernförde
 Germany

Fon: +49.4351.472.0
 Fax: +49.4351.472.740

info@punker.de
 ► www.punker.com

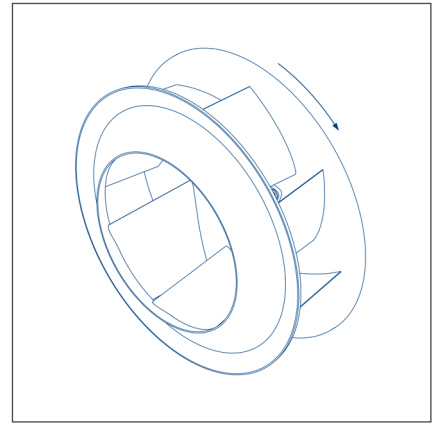
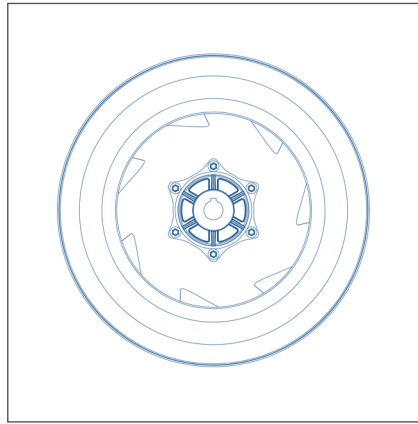
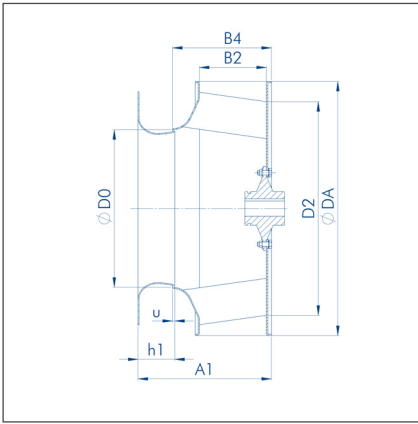
punker LLC
 1112 Lincoln County Pkwy
 Lincolnton, NC 28092
 USA

Fon: +1.828.322.1951
 Fax: +1.828.328.1336

info@punker.com
 ► www.punker-usa.com

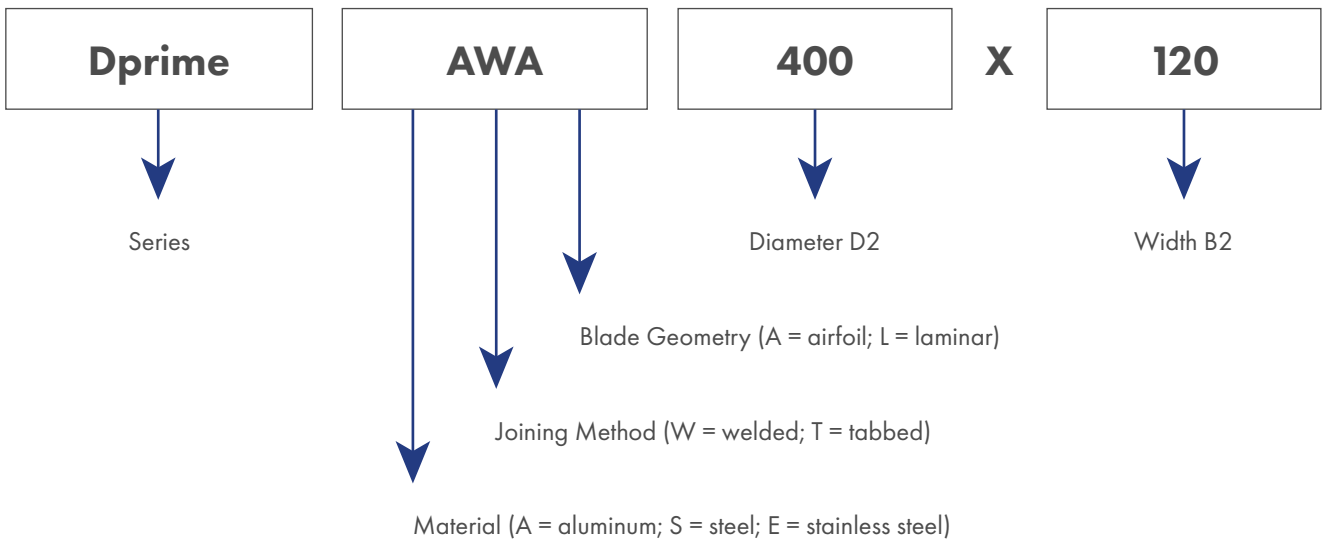
CAR WASH

DIMENSIONS



Direction of rotation example: suction
side view: clockwise rotation (R)

FAN WHEEL TYPE EXPLANATION



punker GmbH
 Newark 1
 24340 Eckernförde
 Germany
 Fon: +49.4351.472.0
 Fax: +49.4351.472.740
 info@punker.de
 ► www.punker.com

punker LLC
 1112 Lincoln County Pkwy
 Lincolnton, NC 28092
 USA
 Fon: +1.828.322.1951
 Fax: +1.828.328.1336
 info@punker.com
 ► www.punker-usa.com

CAR WASH

METRIC DIMENSIONS

Fan wheel dimensions						Hub assembly dimensions		Inlet cone assembly dimensions For details see sheet: 5.1.331-3.01			
Type	D2	B2	ØDA	ØD0	B4	Ødmin	Ødmax	Type	h1	u	A1
	mm	mm	mm	mm	mm	mm	mm		mm	mm	mm
Dprime AWA 355x106,5	355	106,5	404	250,3	158,2	14	42	ED11 355	59,4	3,6	214
Dprime AWA 400x120	400	120	455	282	177,1	14	42	ED11 400	65,7	4,0	238,8
Dprime AWA 450x135	450	135	505	317,3	199,7	19	48	ED11 450	73,6	4,5	268,8

IMPERIAL DIMENSIONS

Fan wheel dimensions						Hub assembly dimensions		Inlet cone assembly dimensions For details see sheet: 5.1.331-3.01			
Type	D2	B2	ØDA	ØD0	B4	Ødmin	Ødmax	Type	h1	u	A1
	inch	inch	inch	inch	inch	inch	inch		inch	inch	inch
Dprime AWA 355x106,5	14	4,19	15,91	9,85	6,23	0,55	1,65	ED11 355	2,34	0,14	8,43
Dprime AWA 400x120	16	4,72	17,91	11,10	6,97	0,55	1,65	ED11 400	2,59	0,16	9,40
Dprime AWA 450x135	18	5,31	19,88	12,49	7,86	0,75	1,89	ED11 450	2,90	0,18	10,58

punker GmbH
 Newark 1
 24340 Eckernförde
 Germany

Fon: +49.4351.472.0
 Fax: +49.4351.472.740

info@punker.de
 ► www.punker.com

punker LLC
 1112 Lincoln County Pkwy
 Lincolnton, NC 28092
 USA

Fon: +1.828.322.1951
 Fax: +1.828.328.1336

info@punker.com
 ► www.punker-usa.com