

HVAC LINE

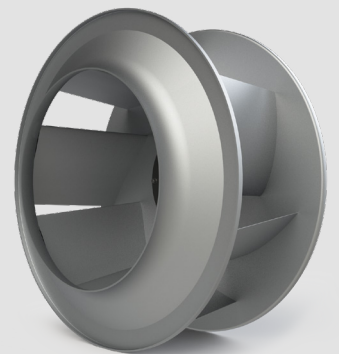
DATA CENTER COOLING



► **APPLICATIONS**

Fan Arrays for Supply / Exhaust Air,
CRAC / CRAH units, Plug fans

The new **Data Center Cooling** fan wheel from punker has been specially developed for supply and exhaust air in data centers where very high volume flows at low pressure are required. The new Data Center Cooling fan wheel achieves a significantly higher efficiency than competitor products in this application area. The use of this fan wheel thus enables savings in the operating costs of a data center and reduction of the carbon footprint. Another positive side effect is the reduction in noise emissions.



punker GmbH
Niewark 1
24340 Eckernförde
Germany

Fon: +49.4351.472.0
Fax: +49.4351.472.740

info@punker.de
► www.punker.com

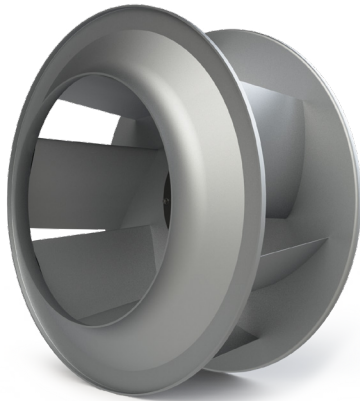
punker LLC
1112 Lincoln County Pkwy
Lincolnton, NC 28092
USA

Fon: +1.828.322.1951
Fax: +1.828.328.1336

info@punker.com
► www.punker-usa.com

DATA CENTER COOLING

SPECIFICATIONS



► TECHNICAL DATA

- Material: aluminum
- Direction of rotation: clockwise (R)
- Design: single flow
- Mounting: Taperlock hub system
- Temperature range: 0°C - 50°C, higher or lower range possible after technical clarification
- Durability through cycle fatigue testing
- Half key balance according to ISO 21940-32
- Balancing according to ISO 21940-11
- Compatible with various AC/EC motors 50/60 Hz

► CUSTOMER NOTE

- Perform installation and start up checks
- Designed for continuous operating S1
- Balance check with possible trim balance is recommended
- Checking of frequencies by customer necessary
- System resonant frequencies must be avoided
- Installation and start-up should be carried out by qualified personnel only
- For technical information please refer to fan wheels data sheet [0.0.0.01/0.0.0.02](#)
- Technical information regarding hubs available through punker Engineering
- Use this fan wheel only with corresponding inlet cone

punker GmbH
 Newark 1
 24340 Eckernförde
 Germany

Fon: +49.4351.472.0
 Fax: +49.4351.472.740

info@punker.de
 ► www.punker.com

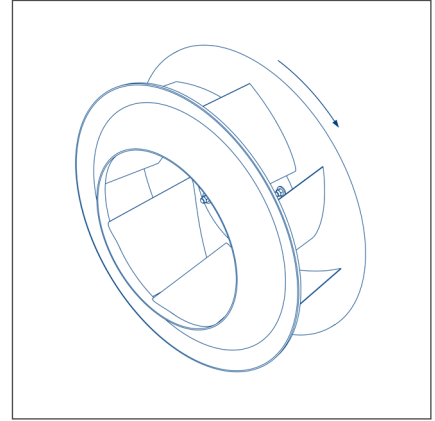
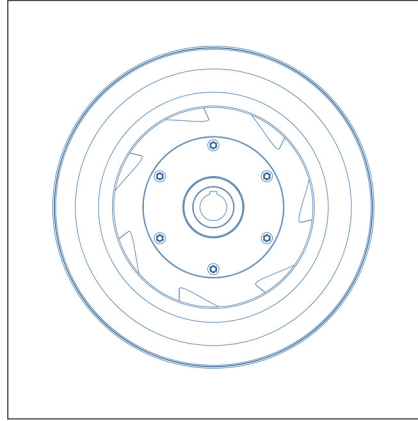
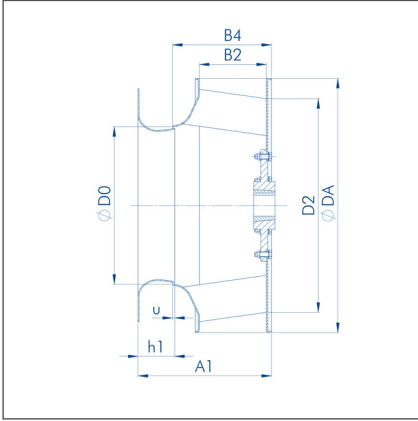
punker LLC
 1112 Lincoln County Pkwy
 Lincolnton, NC 28092
 USA

Fon: +1.828.322.1951
 Fax: +1.828.328.1336

info@punker.com
 ► www.punker-usa.com

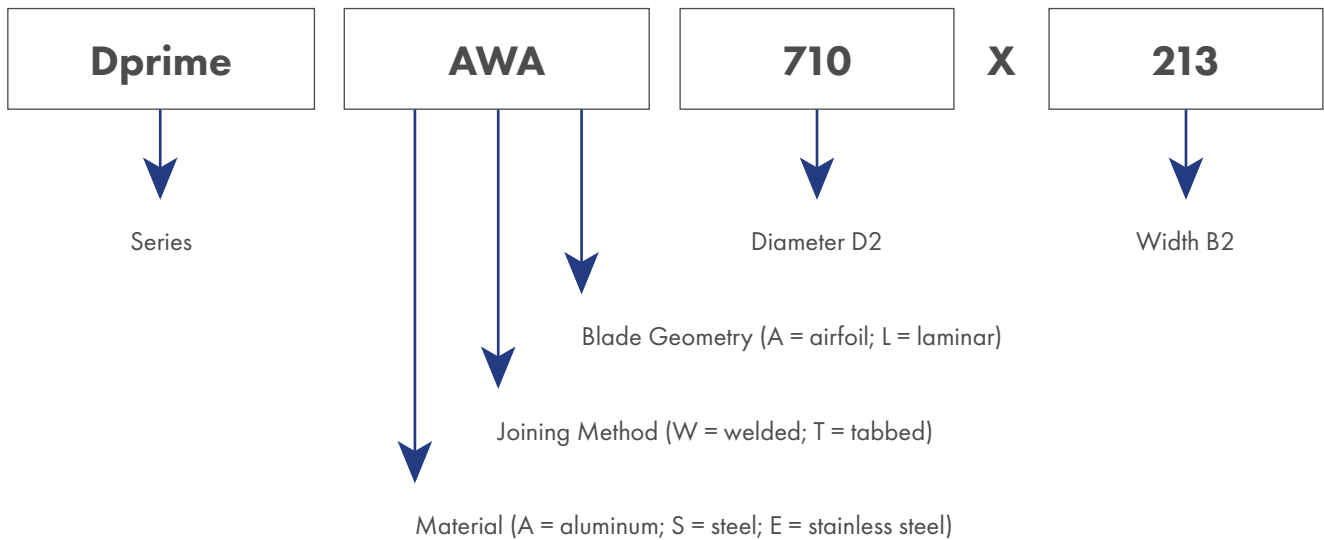
DATA CENTER COOLING

DIMENSIONS



Direction of rotation example: suction
side view: clockwise rotation (R)

FAN WHEEL TYPE EXPLANATION



punker GmbH
 Niewark 1
 24340 Eckernförde
 Germany
 Fon: +49.4351.472.0
 Fax: +49.4351.472.740
 info@punker.de
 ► www.punker.com

punker LLC
 1112 Lincoln County Pkwy
 Lincolnton, NC 28092
 USA
 Fon: +1.828.322.1951
 Fax: +1.828.328.1336
 info@punker.com
 ► www.punker-usa.com

DATA CENTER COOLING

METRIC DIMENSIONS

Fan wheel dimensions						Hub assembly dimensions		Inlet cone assembly dimensions For details see sheet: 5.1.331-3.01			
Type	D2 mm	B2 mm	ØDA mm	ØDO mm	B4 mm	Ødmin mm	Ødmax mm	Type	h1 mm	u mm	A1 mm
Dprime AWA 560x168	560	168	636	394,8	250,7	24	60	ED11 560	92	5,6	337,1
Dprime AWA 560x224	560	224	636	394,8	306,7	24	60	ED11 560	92	5,6	393,1
Dprime AWA 630x189	630	189	716	444,2	283,3	24	60	ED11 630	100	6,3	377,0
Dprime AWA 630x252	630	252	716	444,2	346,3	24	60	ED11 630	100	6,3	440,0
Dprime AWA 710x213	710	213	806	500,6	317,8	24	60	ED11 710	117	7,1	427,7
Dprime AWA 710x284	710	284	806	500,6	388,8	24	60	ED11 710	117	7,1	498,7
Dprime AWA 800x240	800	240	909	564	355,6	28	75	ED11 800	131	8,0	478,6
Dprime AWA 800x320*	800	320	909	564	435,6	28	75	ED11 800	131	8,0	558,6
Dprime AWA 900x360*	900	360	1010	634,5	489,2	28	75	ED11 900	148	9,0	628,2

IMPERIAL DIMENSIONS

Fan wheel dimensions						Hub assembly dimensions		Inlet cone assembly dimensions For details see sheet: 5.1.331-3.01			
Type	D2 inch	B2 inch	ØDA inch	ØDO inch	B4 inch	Ødmin inch	Ødmax inch	Type	h1 inch	u inch	A1 inch
Dprime AWA 560x168	22	6,61	25,04	15,54	9,87	0,94	2,36	ED11 560	3,62	0,22	13,27
Dprime AWA 560x224	22	8,82	25,04	15,54	12,07	0,94	2,36	ED11 560	3,62	0,22	15,48
Dprime AWA 630x189	25	7,44	28,19	17,49	11,15	0,94	2,36	ED11 630	3,94	0,25	14,84
Dprime AWA 630x252	25	9,92	28,19	17,49	13,63	0,94	2,36	ED11 630	3,94	0,25	17,32
Dprime AWA 710x213	28	8,39	31,73	19,71	12,51	0,94	2,36	ED11 710	4,61	0,28	16,84
Dprime AWA 710x284	28	11,18	31,73	19,71	15,31	0,94	2,36	ED11 710	4,61	0,28	19,63
Dprime AWA 800x240	31	9,45	35,79	22,20	14,00	1,10	2,95	ED11 800	5,16	0,31	18,84
Dprime AWA 800x320*	31	12,60	35,79	22,20	17,15	1,10	2,95	ED11 800	5,16	0,31	21,99
Dprime AWA 900x360*	35	14,17	39,76	24,98	19,26	1,10	2,95	ED11 900	5,83	0,35	24,73

* Can be ordered exclusively from punker LLC.

punker GmbH
 Newark 1
 24340 Eckernförde
 Germany

Fon: +49.4351.472.0
 Fax: +49.4351.472.740

info@punker.de
 ► www.punker.com

punker LLC
 1112 Lincoln County Pkwy
 Lincolnton, NC 28092
 USA

Fon: +1.828.322.1951
 Fax: +1.828.328.1336

info@punker.com
 ► www.punker-usa.com